

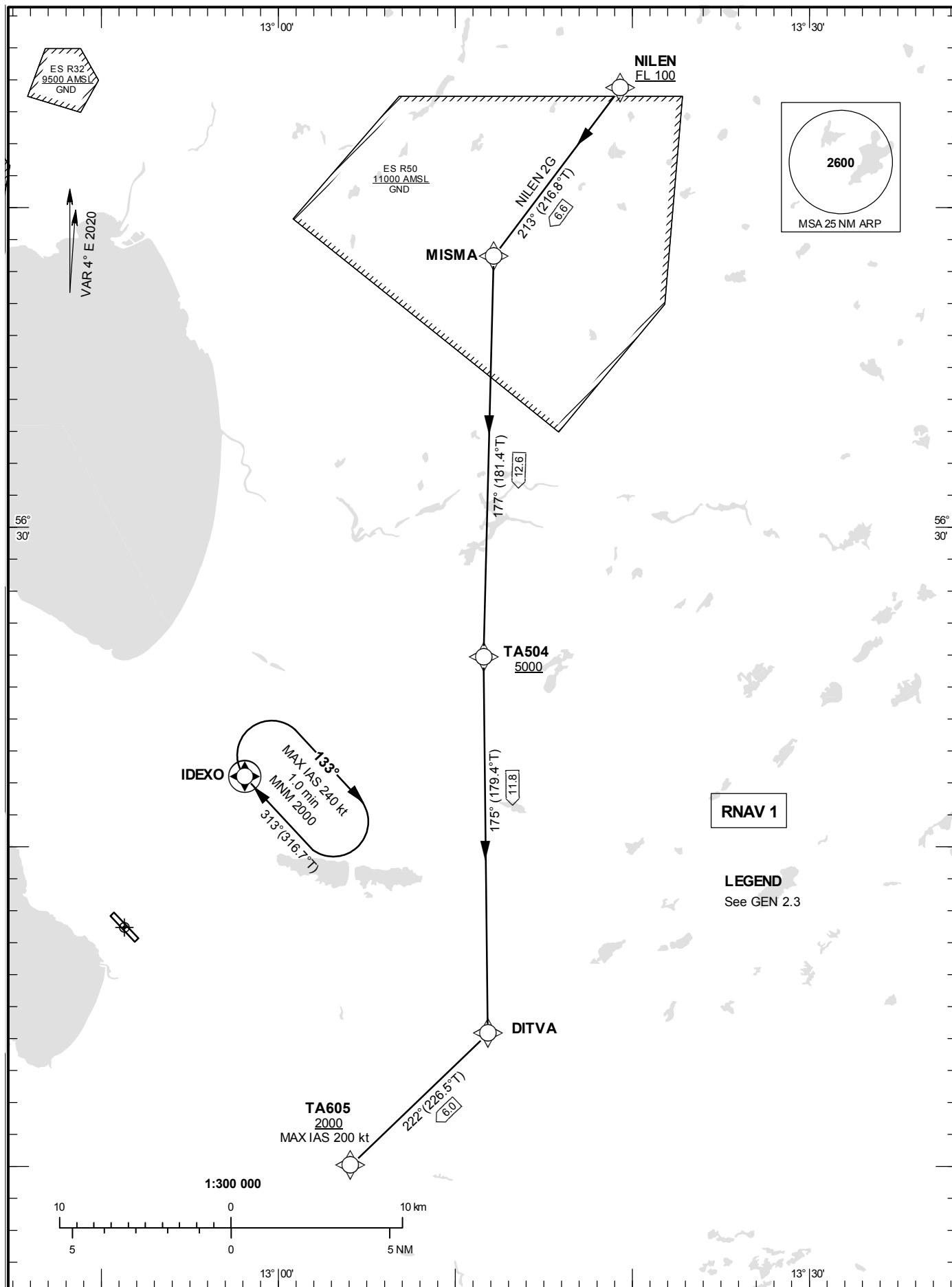
ÄNGELHOLM

STANDARD INSTRUMENT  
ARRIVAL CHART (STAR) -  
ICAO

HGT and ALT in ft  
BRG are MAG (True)  
TA 5000 ft AMSL

ÄNGELHOLM TOWER	127.105
ÄNGELHOLM APPROACH	132.455

RNAV (GNSS) STAR RWY 32



Prescribed Coding of RNAV (GNSS) STAR RWY 32

NILEN 2G

Path Term	Waypoint Identifier	Fly-over	Course °M(°T)	Dist (NM)	Turn Dir	Altitude (ft)	Speed Limits (kt)	VPA/RDH (°/ft)	Rec Navaid	Navigation Specification
IF	NILEN	-	-	-	-	+FL100	-	-	-	RNAV 1
TF	MISMA	-	213° (216.8°)	6.6	-	-	-	-	-	RNAV 1
TF	TA504	-	177° (181.4°)	12.6	-	+5000	-	-	-	RNAV 1
TF	DITVA	-	175° (179.4°)	11.8	-	-	-	-	-	RNAV 1
TF	TA605	-	222° (226.5°)	6.0	-	+2000	-200	-	-	RNAV 1

STAR instruction: NILEN (FL100 or above) – MISMA – TA504 (5000 ft or above) – DITVA – TA605 (Max IAS 200 kt, 2000 ft or above)